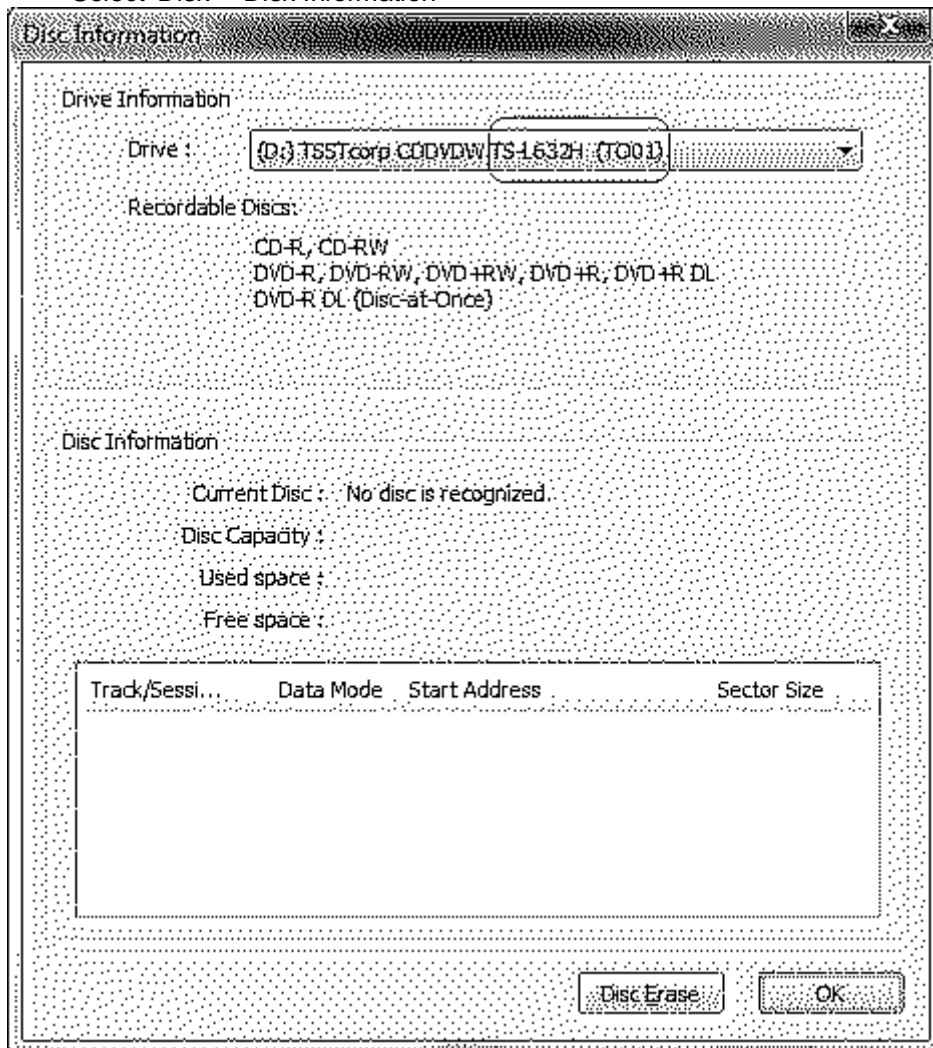


How to update ODD FW

1. Before update FW, make sure ODD number and FW version.
 - Run TOSHIBA disk Creator
 - Select 'Audio CD'
 - Select 'Disk' - 'Disk Information'



-If 'TS-L632* (TO01)', can update FW from 'TO01' to 'TO02'. (got to 2.)

If other ODD number, or FW version is 'TO02' or later, can not update FW. (end)

2. load 'TS-L632H_TO02.ZIP'.
3. decompress 'TS-L632H_TO02.ZIP'. (created 'TS-L632H_TO02.exe')
4. load 'TS-L632H_TO02.exe' to target unit.
5. run 'TS-L632H_TO02.exe' on windows.
6. will update FW from TO01 to TO02.

How to confirm update FW

1. - Run TOSHIBA disk Creator
 - Select 'Audio CD'
 - Select 'Disk' - 'Disk Information'

If 'TS-L632* (TO02)', it is ok.